



Cystoscopy
Patient Instructions

What is a Cystoscopy?

Cystoscopy is a noninvasive office procedure. This is done to see the inside of the bladder and urethra using a thin, lighted tube. Cystoscopy is done with a cystoscope. This is a special tube with a small camera on the end (endoscope). There are two types of cystoscopes:

- Standard, rigid cystoscope
- Flexible cystoscope

The procedure will take about 5 to 20 minutes. The urethra is cleansed. The scope is then inserted through the urethra into the bladder. The Medical Assistant will assist the doctor during the procedure. Most patients tolerate the procedure very well with minimal, if any, discomfort.

Water or salt water (saline) flows through the tube to fill the bladder. As this occurs, you may be asked to describe the feeling. Your answer will give some information about your condition. As fluid fills the bladder, it stretches the bladder wall. This lets your provider see the entire bladder wall. You will feel the need to urinate when the bladder is full. However, the bladder must stay full until the exam is finished.

If any tissue looks abnormal, a small sample can be taken ([biopsy](#)) through the tube. This sample will be sent to a lab to be tested. Your physician will advise you if he/she needs to take a biopsy.

Preparation:

Women, if you are on your menstrual cycle you may want to reschedule.

Medications:

You will be given an antibiotic, Ciprofloxacin (Cipro) in the office the day of your procedure to prevent infection. If you have an intolerance or allergy to Cipro, please notify physician or medical assistant so that we can change medication prior to your procedure.

Post Procedure:

Patients may experience little to no blood in the urine. Blood can last up to 1 week. Any questions, please contact our office to further discuss.

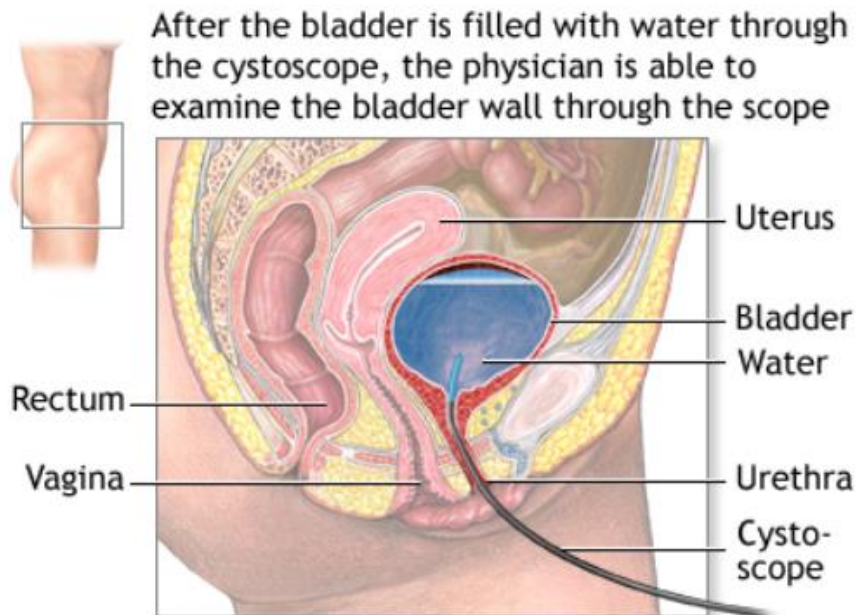
Cancelations/Reschedules:

Please call our office as soon as possible if you need to reschedule this appointment. Cancellations are requested at least 24 to 48 hours in advance so we may have time to offer the time to another patient who is waiting to be seen sooner.



Cystoscopy
Patient Instructions

Cystoscopy



 ADAM.